

# FuelsManager<sup>®</sup>

OIL & GAS



## FuelsManager Enterprise Edition Installation Manual

ADM030GVAE2512  
Version 7.5 SP2

Automation solutions for oil & gas, defense and aviation applications

**Varec<sup>®</sup>**



---

## Copyright

All rights reserved. Printed in the United States of America.

Except as permitted under the United States Copyright Act of 1976, no part of this publication may be reproduced, stored in a retrieval system or transmitted in any form or by any means—electronic, mechanical, photocopying, recording or otherwise—without the prior written permission of the Publisher:

Varec, Inc.  
5834 Peachtree Corners East  
Norcross (Atlanta), Georgia 30092  
Phone: (770) 447-9202  
Fax: (770) 662-8939

## Trademarks Acknowledged

Varec, Inc. recognizes all other trademarks. Trademarks of other products mentioned in this manual are held by the companies producing them.

FuelsManager®, TankView®, TacFuels® and Varec® are registered trademarks of Varec, Inc.

Acrobat Reader® is a registered trademark of Adobe Systems Incorporated.

Crystal Reports® is a registered trademark of Business Objects.

HTML, DHTML, XML, XHTML are trademarks or registered trademarks of W3C®, World Wide Web Consortium, Massachusetts Institute of Technology.

Microsoft®, WINDOWS®, NT®, EXCEL®, Word®, PowerPoint® and SQL Server® are registered trademarks of Microsoft Corporation.

SAP, SAP Logo, R/3, mySAP, mySAP.com, and other SAP products and services mentioned herein as well as their respective logos are trademarks or registered trademarks of SAP AG in Germany and in several other countries all over the world.

All other product and service names mentioned are the trademarks of their respective companies.

## Using This Publication

The *FuelsManager Terminal Automation Edition User Manual* explains the basics of working with FuelsManager Oil and Gas, including tasks that an end user will complete. It covers three main sections: Accounting, Load Rack, and Order Entry.

Before reading this publication, you should become familiar with the operation of Microsoft Windows. This manual is intended for system administrators and local administrators. For additional information about the FuelsManager application.



# Contents

<b>FuelsManager 7.5 Service Pack 2 Installation</b> .....	1
Overview .....	1
Prerequisites .....	1
New Installations .....	1
Upgrade Instructions .....	2
Installation Procedure .....	3
Database Model Upgrade .....	8
Database Upgrade Procedure .....	8
CITGO SAP Interface Installation .....	9
Error List .....	12



# FuelsManager 7.5 Service Pack 2 Installation

---

## Overview

This procedure assists you with FuelsManager 7.5 Service Pack 2 installation.

---

## Prerequisites

The following prerequisites must be met before attempting to install FuelsManager 7.5 Service Pack 2.

- IIS version 5 or greater (IIS 7 requires IIS 6 Management Compatibility features)
- SQL 2005 or SQL 2008 with Reporting Services

You must have the Administrator rights to install FuelsManager 7.5 Service Pack 2.

**! Warning** You must have a FuelsManager 7.5 hardware key for this upgrade. If you have a 7.4 or earlier hardware key, do not begin this upgrade until you have the appropriate key.

Prior to upgrading FuelsManager from version 7.5 Service Pack 1, follow your local procedures to back up the FuelsManager databases.

## New Installations

For new installations, on computers that have not had FuelsManager installed previously, you must install Microsoft SQL 2005 or SQL 2008 with the following features:

- Database Engine Services
- Reporting Services
- Business Intelligence Development Studio
- Integration Services (in Start > Programs > Microsoft SQL Server 2008)
- SQL Management Studio, including the following:
  - Management Tools – Basic
  - Management Tools – Complete
- Application Server role (Server Manager\Roles)
- Application Server role services, set the following:
  - Application Server Foundation
  - COM+ Network Access
- Web Server role assignment (Server Manager\Roles)
- In Application Development, check the following:
  - ASP.NET
  - .NET Extensibility
  - ISAPI Extensions
  - ISAPI Filters
- In Management Tools, check the following:
  - IIS Management Console
  - IIS 6 Management Compatibility

## Upgrade Instructions

The sequence for upgrading a previous version of FuelsManager to the Service Pack 2 release is critical. The following steps must be followed *in this order* to ensure a successful upgrade.

- Back up the FuelsManager database
- Back up the following file:  
C:\Program Files\FuelsManager\CITGOSAPInterface\CITGOSAPService.exe.config

**Note** Failure to back up the CITGOSAPService.exe.config file will result in loss of all configuration settings.

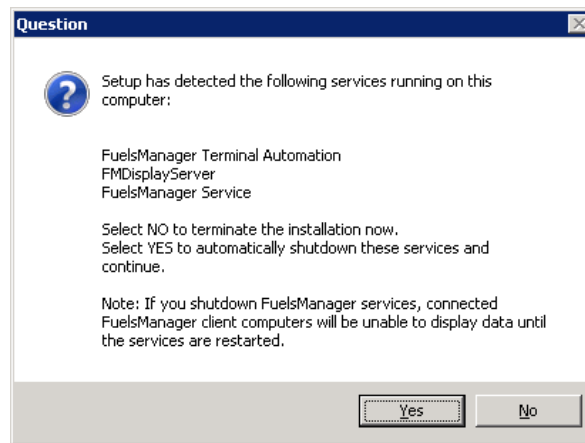
- Using Windows Add/Remove Programs, uninstall the SAP Interface
- Install FuelsManager 7.5 SP2
- Upgrade the Database model
- Install the new SAP interface
- Verify standard reports are up-to-date and upgrade custom reports



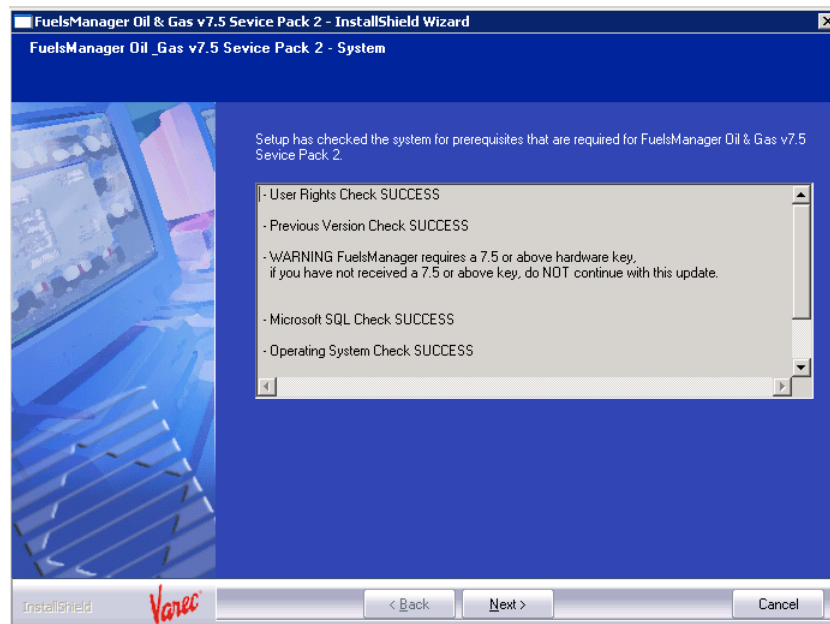
## Installation Procedure

To install FuelsManager 7.5 SP2:

1. If you are upgrading an existing FuelsManager installation, stop all FuelsManager Services.
2. Uninstall the CITGO SAP interface.
3. Close all instances of Internet Explorer.
4. Insert the DVD into the DVD reader.
5. Using Windows Explorer, locate and run FM75SP2setup.exe.
  - a. If you have a previous version of FuelsManager on the computer, you may see the following window informing you that FuelsManager services are running.

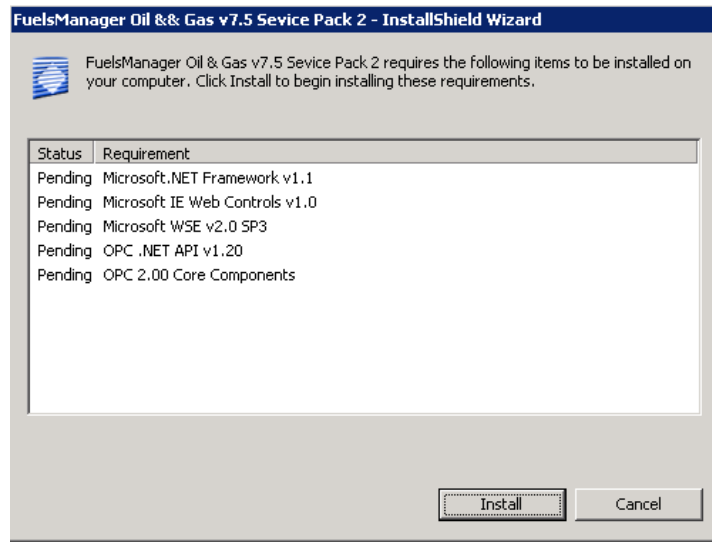


- b. Click Yes to continue.
- c. The setup system check window opens to inform you that all the prerequisite programs are present.

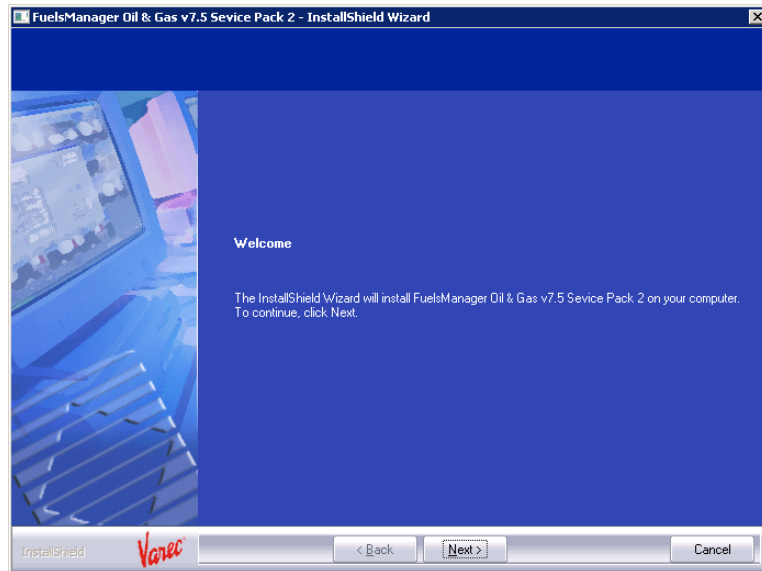


**Note** The FuelsManager installation software checks for the correct versions of prerequisite programs and notifies you if it finds any problems. You must correct any problems before continuing the installation.

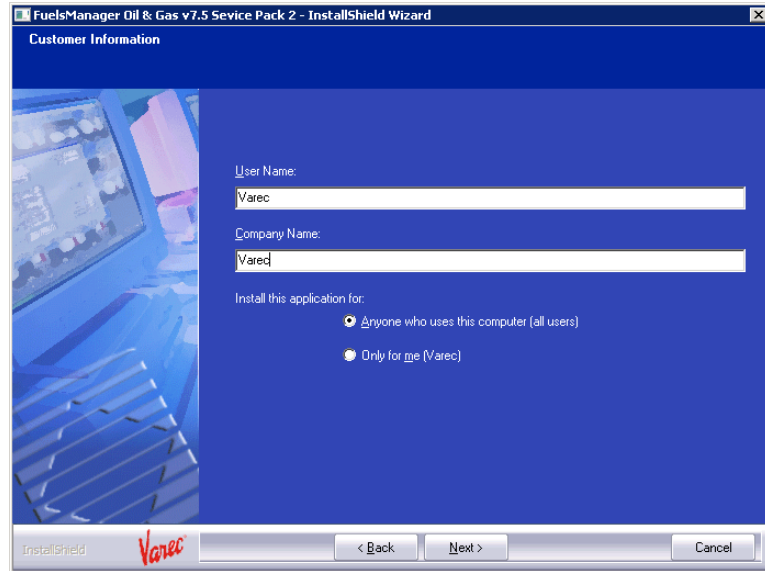
- d. If you are doing a new install, the following window opens.



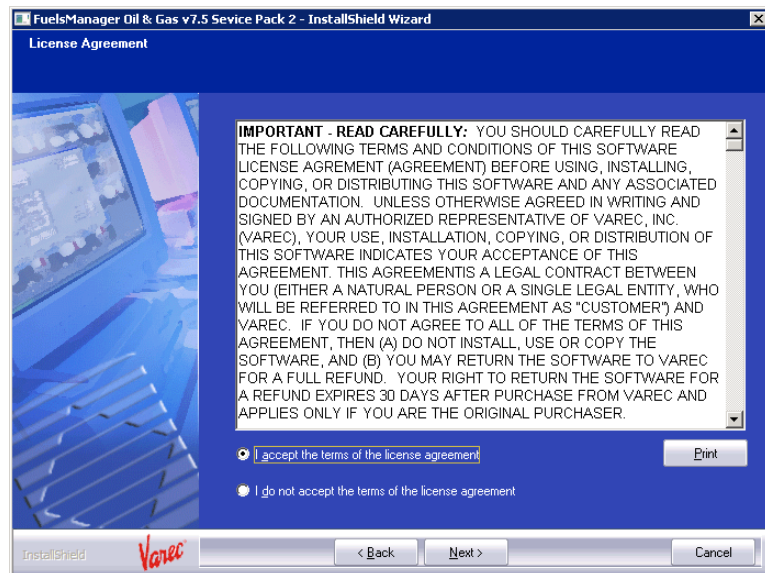
- e. Click Install to install these required programs.  
6. Click Next and the Welcome window opens:



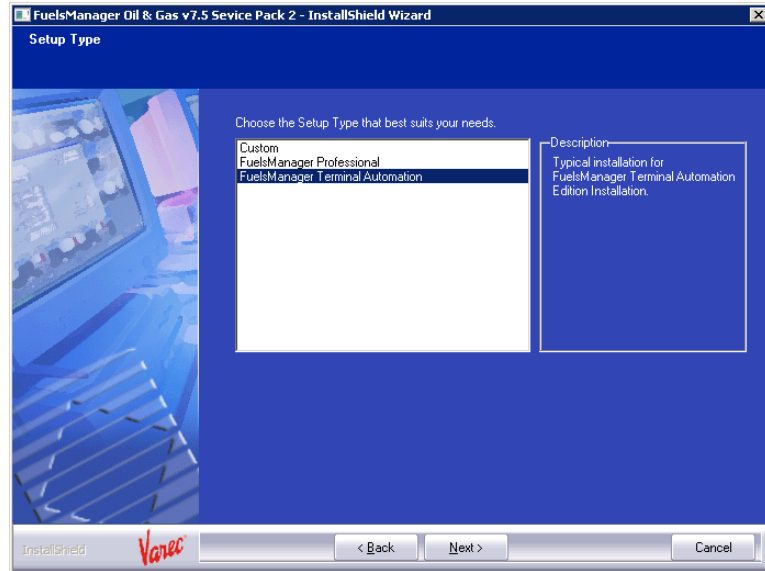
7. Click Next and the Customer Information window opens.



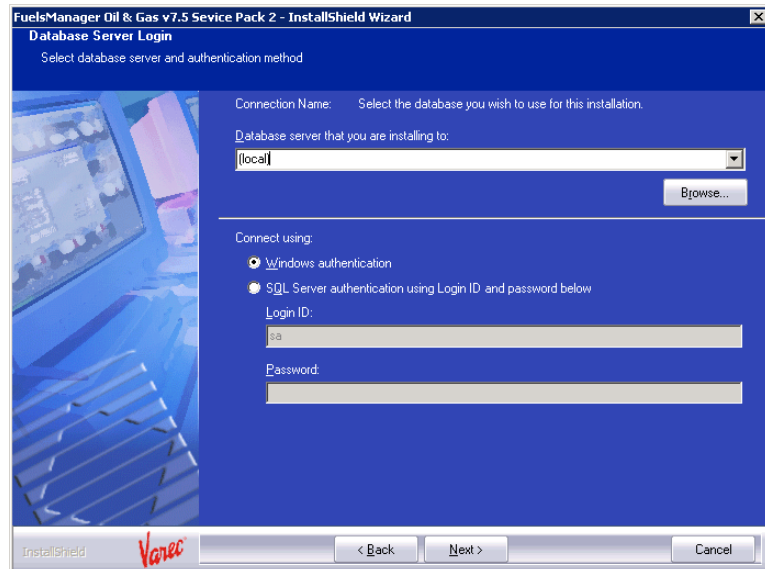
8. Type a User Name and Company Name in the fields provided.
9. Make a selection as to who has access to FuelsManager on this computer.
10. Click Next and the License Agreement window opens.



11. After reviewing the license agreement, select *I accept the terms of the license agreement*.
12. Click Next and the Setup Type window opens.



13. Select a setup type:
  - FuelsManager Professional
  - FuelsManager Terminal Automation.
14. Click Next and the Database Server Login window opens.

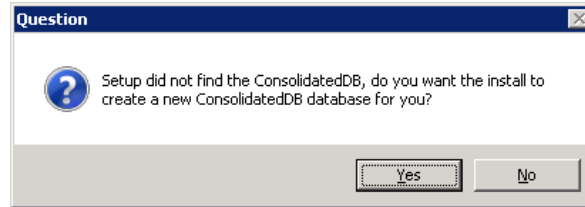


15. Type the name or Browse to the Microsoft SQL Database server that you are installing to. If the Microsoft SQL Database is installed on this computer (local) may be entered.
16. Make a selection in Connect using of either Windows authentication or SQL Server authentication.
 

If you do not know the Login ID and Password for SQL Server, leave the default of Windows authentication selected.

If you use SQL Server authentication, type the Login ID and Password in the fields provided.
17. Click Next.
 

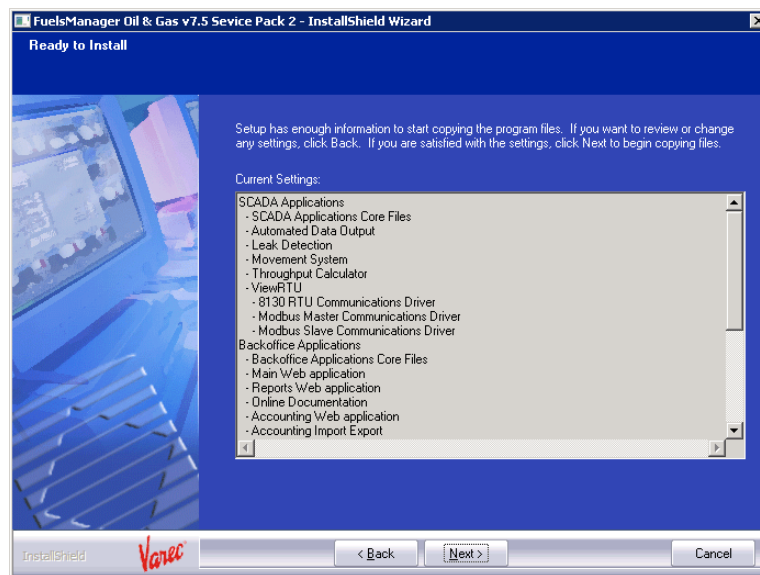
If this is a new installation, the ConsolidatedDB Question window opens.



- a. Click Yes to create the ConsolidatedDB. When the ConsolidatedDB is complete, continue to Step 17.

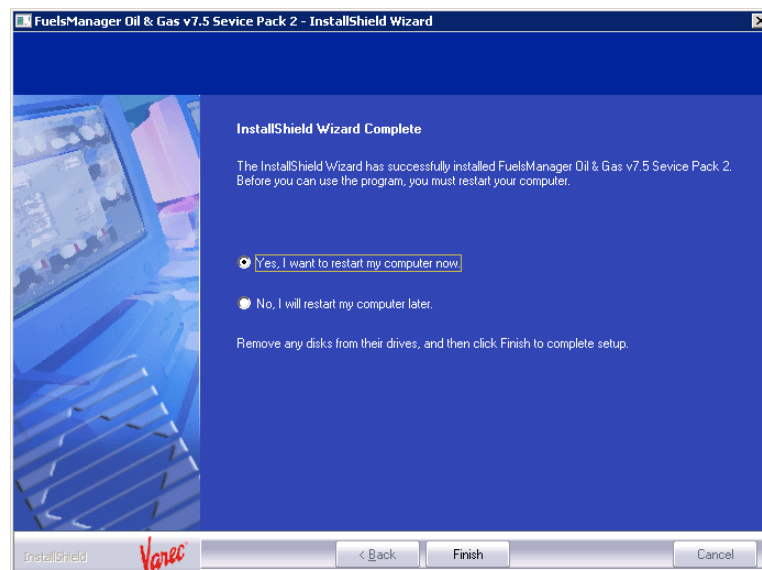
If FuelsManager has been installed on this computer previously, continue to Step 17.

18. The Ready to Install window opens. This window shows you the settings FuelsManager uses to install SP2.



19. Click Next to begin the installation.

20. During the FuelsManager installation, a status window opens to give you a visual display of the progress.



21. When the FuelsManager installation is complete, you are prompted to reboot the computer. This reboot is mandatory so that FuelsManager services can start properly. Click Finish to complete the installation and reboot your computer.

---

## Database Model Upgrade

The following procedure is for upgrades only. If this is a new installation, continue to the next section.

Prior to upgrading the database model, follow all established procedures to backup all FuelsManager databases.

During the installation procedure, you need to set up a command prompt window (Start > Run > Cmd) with the following parameters:

Right-click in the title bar and select Properties:

- In Options panel, Edit Options area, enable the Quick Edit Mode
- In the Layout panel:
  - Change the Window size to 132 characters width and 999 lines height
  - Change the Screen Buffer size to 132 width and 999 height

These modifications to the command window enable you to copy and paste errors into a text file for later research.

### Database Upgrade Procedure

1. Stop all FuelsManager services.
2. Connect to the database server.
3. Open the command window (as described above).
4. Using the command prompt, change the directory to the installation media as follows:  
~\Database Model\StandardDatabase\Database Installation Package
5. Run the following command (you must type the quote marks):  
"\_Envision DB Install.cmd"
6. Answer the following questions:  
Database Name (press Enter for ConsolidatedDB)  
Server and Instance (press Enter to accept the default)
7. Watch the command window for any errors which are listed in red. Copy and paste any errors to a text file to compare with the Error List at the end of this procedure.
8. In the command window, change to the following directory:  
~\Database Model\EditionTAS\Database Installation Package
9. Run the following command (you must type the quote marks):  
"\_Envision DB Install Edition.cmd"
10. Answer the following questions:  
Database Name (press Enter for ConsolidatedDB)  
Server and Instance (press Enter to accept the default)

11. Watch the command window for any errors which are listed in red. Copy and paste any errors to a text file to compare with the Error List at the end of this procedure.
12. Start all required FuelsManager services.
13. Restart WWW Publishing service.

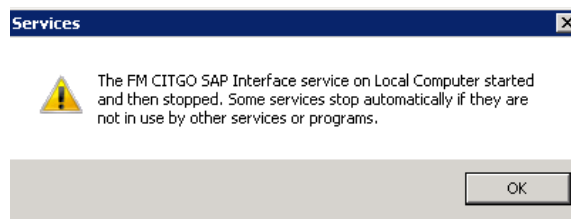
### CITGO SAP Interface Installation

This installation procedure is for CITGO SAP Interface sites only. Use this procedure for updating the CITGO SAP Interface.

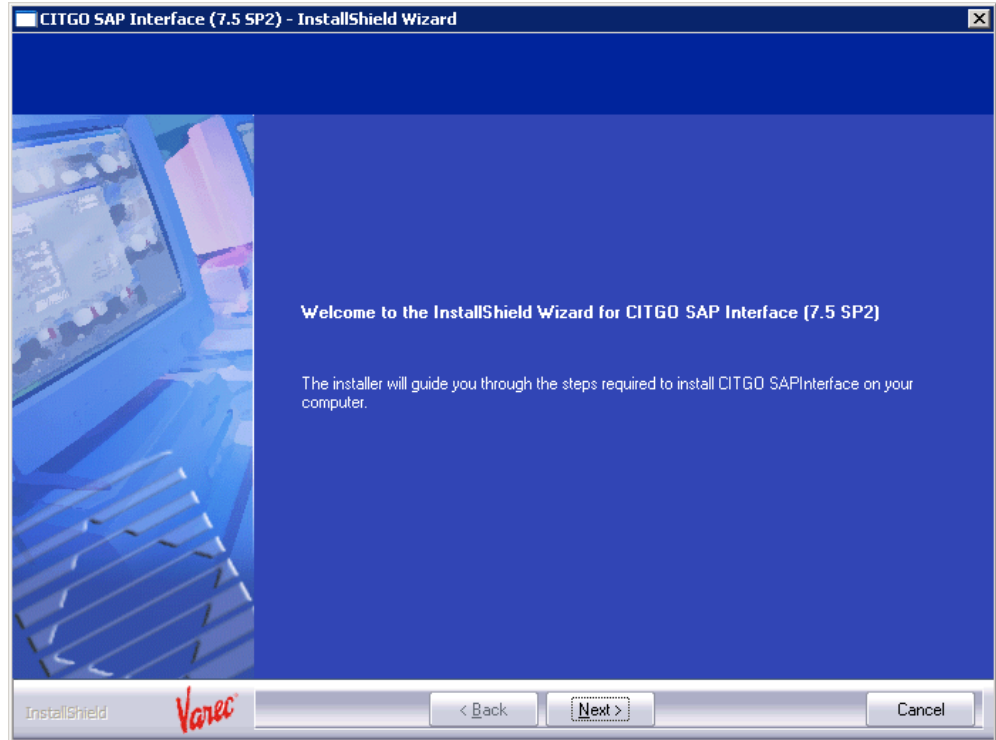
1. For a new install, create the following directories:

- C:\temp\
  - C:\temp\SAPUploadArchive
  - C:\temp\SAPMasterDataArchive
  - C:\temp\MasterFileDownload
  - C:\temp\sapdownload

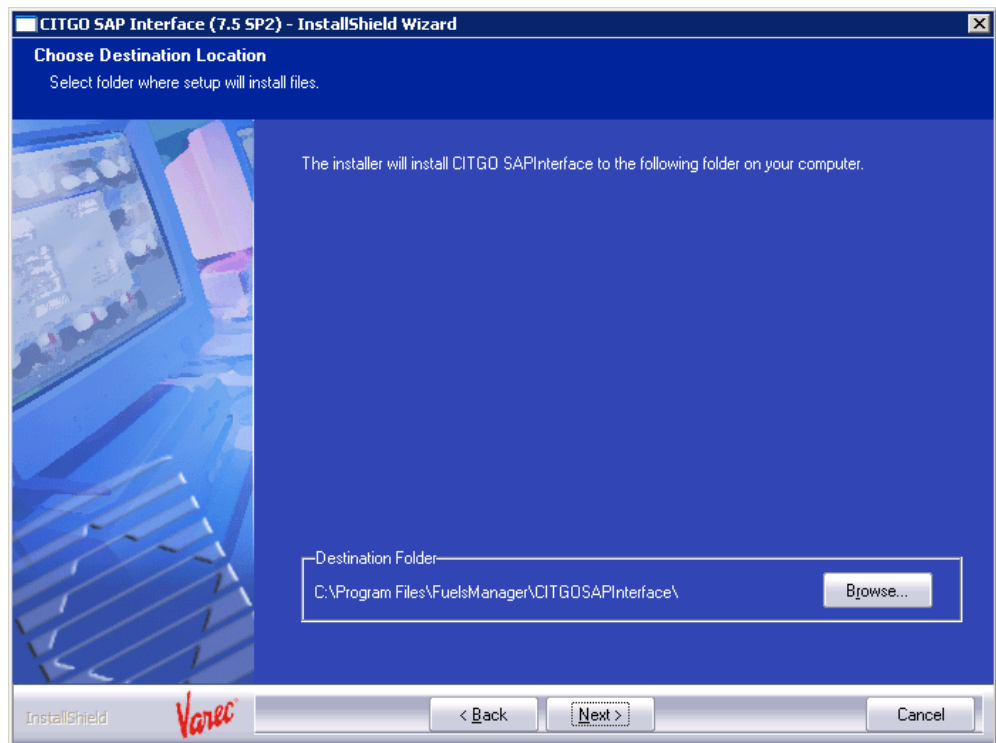
If you do not create the above directories, you will see the error message below. The message clears when the directories are created.



2. Insert the Installation DVD, using Windows Explorer locate and open the Installation directory.
3. Double-click the CITGO\_SAP\_InterfaceSetup.exe to begin the update. A Welcome Window opens.

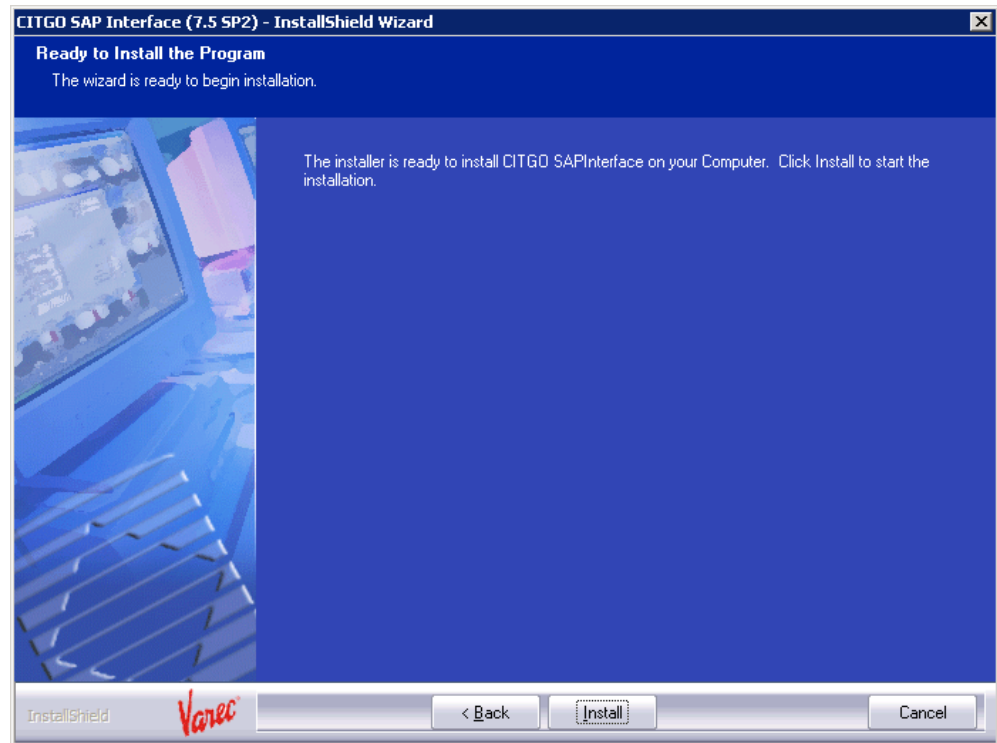


4. Click Next and the Choose Destination Location window opens.

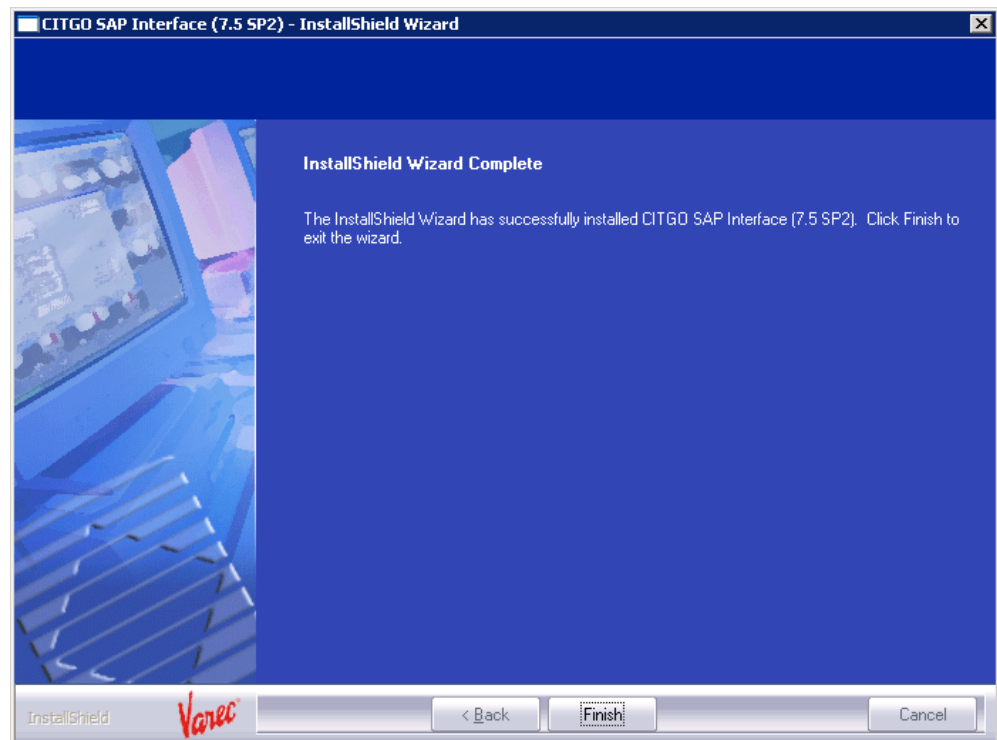


5. Accept the default location if the SAP Interface is installed there. If you need to make a change, click Browse and select the appropriate directory.
6. Click Next and the Ready to Install the Program window opens.





7. Click Install. A progress window opens to show you the installation progress.
8. When the installation is complete, the InstallShield Wizard Complete window opens.



9. Click Finish to complete the installation.
10. Start FM CITGO SAP Interface service.

Error List

This Error List is provided for the Windows 7 operating system. If you note any errors generated during the database upgrade that are listed here, you may safely disregard the errors. They do not pose any deployment risks.

Database	Event	Error	Comments/Resolution	Deployment Risks
SQL Server 2005	Creating ConsolidatedDB	*** TSD01268 .Net SqlClient Data Provider: Msg 1834, Level 16, State 1, Line 1 'C:\Program Files (x86)\Microsoft SQL Server\MSSQL.1\MSSQL\Data\ConsolidatedDB.mdf' cannot be overwritten. It is being used by database. 'ConsolidatedDB'	Known Error	No
SQL Server 2005	Creating ConsolidatedDB	*** TSD01268 .Net SqlClient Data Provider: Msg 1828, Level 16, State 4, Line 1 The logical file name "ConsolidatedDB" is already in use. Choose a different name.	Known Error	No
SQL Server 2005	Creating ConsolidatedDB_log	*** TSD01268 .net SqlClient Data Provider: Msg 1828, Level 16, State 4, Line 1 The logical file name "ConsolidatedDB_log" is already in use. Choose a different name.	Known Error	No
SQL Server 2008	Creating ConsolidatedDB	*** TSD01268 .Net SqlClient Data Provider: Msg 1834, Level 16, State 1, Line 1 'C:\Program Files (x86)\Microsoft SQL Server\MSSQL.1\MSSQL\Data\ConsolidatedDB.mdf' cannot be overwritten. It is being used by database 'ConsolidatedDB'	Known Error	No
SQL Server 2008	Creating ConsolidatedDB	*** TSD01268 .Net SqlClient Data Provider: Msg 1828, Level 16, State 4, Line 1 The logical file name "ConsolidatedDB" is already in use. Choose a different name.	Known Error	No
SQL Server 2008	Creating ConsolidatedDB_log	*** TSD01268 .net SqlClient Data Provider: Msg 1828, Level 16, State 4, Line 1 The logical file name "ConsolidatedDB_log" is already in use. Choose a different name.	Known Error	No
SQL Server 2008		*** TSD01268 .Net SqlClient Data Provider: Msg 15063, Level 16, State 1, Line 1 The login already has an account under a different user name.	Known Error	No
SQL Server 2008		*** TSD01268 .Net SqlClient Data Provider: Msg 15410, Level 11, State 1, Procedure sp_addrolemember, Line 75 User or role 'NT AUTHORITY\ANONYMOUS LOGON' does not exist in this database.	Known Error	No
SQL Server 2008		*** TSD01268 .Net SqlClient Data Provider: Msg 15410, Level 11, State 1, Procedure sp_addrolemember, Line 75 User or role 'NT AUTHORITY\ANONYMOUS LOGON' does not exist in this database.	Known Error	No
SQL Server 2008		*** TSD01268 .Net SqlClient Data Provider: Msg 15410, Level 11, State 1, Procedure sp_addrolemember, Line 75 User or role 'NT AUTHORITY\ANONYMOUS LOGON' does not exist in this database.	Known Error	No

Table 1-1: Windows 7 Error Messages



Varec, Inc. • 5834 Peachtree Corners East, Norcross (Atlanta), GA 30092 USA  
Tel: +1 (770) 447-9202 • Fax: +1 (770) 662-8939  
[www.varec.com](http://www.varec.com)